

## **SUGAR BUSINESS OF INVELT COMPANY**

### **MILL HOUSES EQUIPMENT BENEFITS:**

- ✓ Low initial costs
- ✓ Proven high reliability
- ✓ High technical level
- ✓ High quality
- ✓ High efficiency
- ✓ Long service life

### **DESIGN AND PRODUCTION OF SUGAR CANE MILL HOUSES:**



- Capacity 500 – 20 000 tons of cane per day
- Basic and Detail Engineering
- Complete scope of Services
- Delivery of Spare Parts of any type of mill house equipment

### **MODERNIZATION OF EXISTING SUGAR CANE MILL HOUSES:**

- Upgrading of capacity
- Upgrading of existing mill houses
- Roller reshelling
- Analysis of the existing state and problems solution
- Engineering, expansion projects and efficiency improvements
- Equipment design, production, delivery and putting into operation
- Complete scope of services



## **SUGAR BUSINESS OF INVELT COMPANY**

### **SELECTED REFERENCES:**

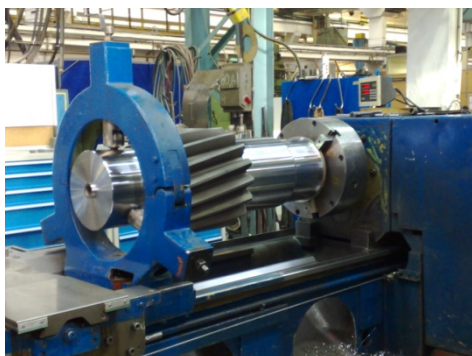
INVELT equipment and services deliveries for sugar plants are world-wide therefore let us provide you with several references from our extensive reference list:

#### **Pioneer Sugar Mill, Australia**

- Design, delivery, supervision and commissioning of excitation set, electrical protections, electrical measurement & synchronizing, generator output & neutral point, direct current switchboard 110 V DC etc. for TG 38,6 MVA

#### **Hamza Sugar Mills Ltd., Pakistan**

- Delivery of spare parts for gearbox



#### **E-Saan Sugar Industry, Thailand**

- Delivery of pinion assemblies for gearboxes
- Delivery of spare parts for mill lubrication system

#### **SUDCCO (Sugar Cane & Development Company), Iran**

- Technical assistance – supervision of assembly of 8 pcs drive turbines
- Change of damaged rotor of mill turbine





## **SUGAR BUSINESS OF INVELT COMPANY**

### **SELECTED REFERENCES:**

#### **Egyptian Sugar & Integrated Industries Co., Egypt**

- Delivery of excitation systems and electric protections and turbine control systems for TG 4 – 16 MW, MV switchgears, generator output and neutral systems etc. for various sugar factories
- Delivery of Elliott turbine for mill drive



- Delivery of mill stands for Fulton and Kawasaki tandems
- Delivery of spare parts – mill pinions and bearings for various sugar factories



#### **Central Azucarera San Antonio, Philippines**

- Technical assistance – setting up of 2 sets dewatering mills dia 42 ½" x 84" and test run
- Delivery of spare parts - mill rollers, pressure feeder rollers, pinions etc.



## **SUGAR BUSINESS OF INVELT COMPANY**

### **SELECTED REFERENCES:**

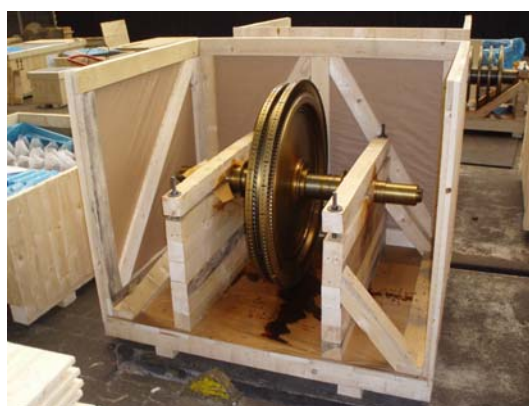


#### **Bioenergetica Aroeira, Brazil through UNI-systems**

- Delivery of four-roller dewatering sugar cane mill 39x66

#### **SUDCCO (Sugar Cane & Development Company), Iran**

- Technical assistance – supervision of putting into operation of 8 pcs drive turbines SKODA
- Technical assistance – supervision of putting into operation of milling line No.6 – Farabi
- Delivery of spare parts for shredder, cutter and mill turbines SKODA





## **SUGAR BUSINESS OF INVELT COMPANY**

### **SELECTED REFERENCES:**

#### **Agricola del Chira, Peru through UNI-systems**

- Delivery of four-roller dewatering sugar cane mill 36x66



#### **Busco Sugar Milling Co., Philippines**

- Delivery of spare parts for SKODA cutter turbines
- Delivery of spare parts – cane mill roller

#### **New Krung Thai Sugar Factory, Thailand**

- Design and manufacture documentation of 6 sets cane crushing six-roller mills 43x86
- Design and manufacture documentation of 1 set cane crushing six-roller mill 45x90

